

# Forest ownership changes in Europe: trends, issues and needs for action

## FINAL CONFERENCE of the COST Action FP1201 FACESMAP

7 – 9 September 2016

University of Natural Resources and Life Sciences, Vienna

### PRACTICAL INFORMATION

## 1. Venue

The event will take place at the University of Natural Resources and Life Sciences (BOKU).

Address: Peter-Jordan-Strasse 82, 1190 Vienna

Meeting room: Wilhelm-Exner-Haus (Room EH01)  
Schwackhöfer-Haus (Rooms SR04, SR06, SR09, SR10)

## 2. Logistics

*Travel to/from Vienna*

We are kindly asking our participants to make their own travel arrangements to/from Vienna.

In case you travel by car we kindly ask you to plan your route on your own, e.g. via [Google maps](#).

If you travel by plane you will arrive at Vienna International Airport. From Vienna airport there are several options to proceed to the venue/hotels:

### By Taxi

Arriving at the airport you will find an array of taxis at your disposal. You can hire them directly after check-out at the exit. Prices belong to the travel distance (start price: € 3,80 + ~ € 1,30/km), thus the transfer to BOKU may cost you around € 50,- Various companies offer pre-bookings (via telephone/e-mail or online – just click “ctrl + the link” in the table below) at fix rates (~ € 33,- for one-way / cab -> i.e. you may fill the cab and share costs):

Company	Phone
<a href="#">Airport Driver</a>	+43-1-22822
<a href="#">ATS Airport Transfer Service</a>	+43-1-7007-35905
<a href="#">Flughafentaxi ttc</a>	+43-1-330-15-05
<a href="#">40100</a>	+43-1-40100

More information is available at

<http://viennaairport.com/jart/prj3/va/main.jart?rel=en&content-id=1249344074251&reserve-mode=active>

### By City Airport Train

Additionally, you can go by CAT (City Airport Train) and continue by metro or taxi. The CAT takes you in 16 minutes nonstop to the city centre (one-way € 11, return € 17). You can directly book in advance via <https://www.cityairporttrain.com/en/home>.

If you choose to go by CAT you will need to take different public modes of transportation, as described below. The easiest way to reach BOKU University from the final station (i.e. Landstrasse – Wien Mitte) is as follows:

- Take the metro **U 4** (direction Heiligenstadt) and go to *Heiligenstadt*
- Continue by bus **10 A** (direction Niederhofstrasse) until bus stop *Dänenstrasse*.

Busses depart directly in front of the main entrance / exit. Tickets are available on terminals within the station (€ 2,20). These tickets can be used for any single trip within Vienna – you may change lines, but you may not interrupt your journey (and please don't forget to stamp them!).

### **Please check for individual opening hours:**

CAT	05:36 to 23:06 (daily)
Metro	05:00 to 24:00 (Mo – Fr); 24 hours (Sa + Su)

### Other Bus Lines / trains

Several busses depart from the airport as well and connect Vienna Airport with the main Vienna transport hubs. Lines and timetables are available [online](#).

The same is true for additional train connections like the suburban railway and long-distance trains. Most of them operate via the new Vienna Central Station. Please have a look [here](#) or check more detailed timetables at [ÖBB](#).

## 3. Transportation in Vienna

Vienna is well covered with public means of transportation (i.e. metro, tram, bus). Several ticket options exist (e.g. 1, 2 or 4 trip(s); 24, 48 and 72 hours). You can purchase them in the ticket offices at various metro stations (Mo – Fr, 6:30-18:30), online or at the [terminals](#) within the stations. For trams and busses you may buy them directly from the driver (but: the price is € 2,30). Tickets must be stamped in the blue ticket stampers before boarding. You will find them

- onboard of trams and busses
- at the barriers before entering the underground railway



### **Important notices about Wienerlinien:**

- Please note that ticket controls are frequent and unpredictable. You should always have a ticket. In case you are caught without a ticket you are liable to pay a fine of € 100,-.
- You can use this [service site](#) to plan public Transportation routes in Vienna
- Timetables are [available online](#)

Alternatively you can also take a taxi. All taxis are metered – if one doesn't have a meter please do not ride in it. As indicated above (2. Logistics) prices belong to the travel distance. The starting price is € 3,80, a single kilometer is around € 1,30. We recommend the following taxi companies:

<a href="http://www.taxi40100.at/">http://www.taxi40100.at/</a>	40100 / +43-1-614550
<a href="http://www.taxi60160.at/">http://www.taxi60160.at/</a>	60160 / +43-1-614550
<a href="http://www.taxi31300.at/">http://www.taxi31300.at/</a>	31300 / +43-1-476760

For other useful information on transportation, a list of taxi companies and respective numbers please check [this webpage](#).

#### 4. Accommodation

We are kindly asking our participants to make their own accommodation arrangements. Please find below a selection of hotels we would like to recommend. All of them are close to the venue and offer a reduced price for BOKU guests. You may benefit from this conditions by indicating "BOKU" as a keyword during the reservation/booking procedure (this is true for all three hotels). A list of additional hotels (some of them also offer reduced prices for BOKU guests) is available [here](#).

##### Hotel Kaiser-Franz-Josef

<https://www.deraghotels.de/hotel-kaiser-franz-joseph-wien/en/>

Single (economy)	79,72
Single (business)	89,99
Double (economy) single use	99,85 84,85
Double (business) single use	110,13,- 95,13

The venue of the event can be easily accessed from the hotel by walking to the bus stop "Friedlgasse" and entering the bus 39A (direction Heiligenstadt) to stop "Silbergasse", from there you can take the bus 10A (direction Niederhofstraße) and proceed to stop "Dänenstraße". If you prefer to walk it might take you around 20 minutes (distance: 1.4 km).

##### Hotel IBIS Styles

<http://www.parkvilla.at/en/>

Single (standard)	88,-
Single (superior)	98,-
Single (superior garden view)	108,-
Double use (for all cases)	40,-

From Hotel IBIS Styles you can take the bus 37A (direction Dänenstraße) from the stop "Döblinger Gürtel" close to the hotel and exit directly in front of the main entrance of the BOKU University when getting off at bus stop "Linnéplatz". Or you start by tram 38 from Glatzgasse (direction Grinzing) and change to bus 10 A (direction Niederhofstraße) at stop "Gatterburggasse" and exit at "Dänenstrasse".

##### Hotel Senator

<http://www.senator-hotel.eu/en/senator-hotel.html>

Single	85,-
Double	109,-

You can access the venue from Hotel Senator by taking bus 10A at bus stop “Hernalser Hauptstraße/Wattgasse”, not far from the hotel, and exit at “Dänenstraße”.

In the following two figures we provide you with an overview of the various locations and a more detailed look on the relevant bus stops in the surrounding of the venue.

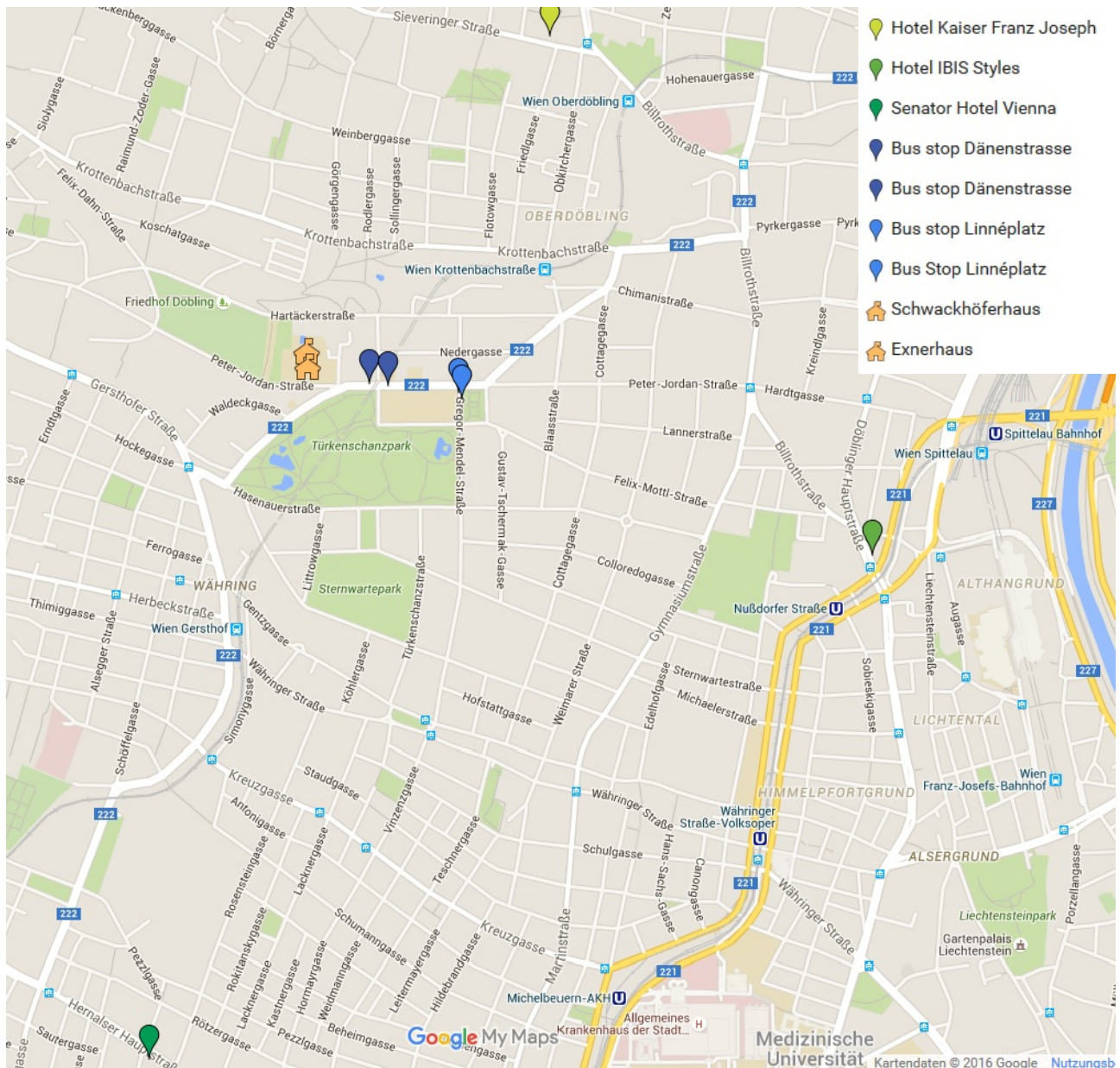
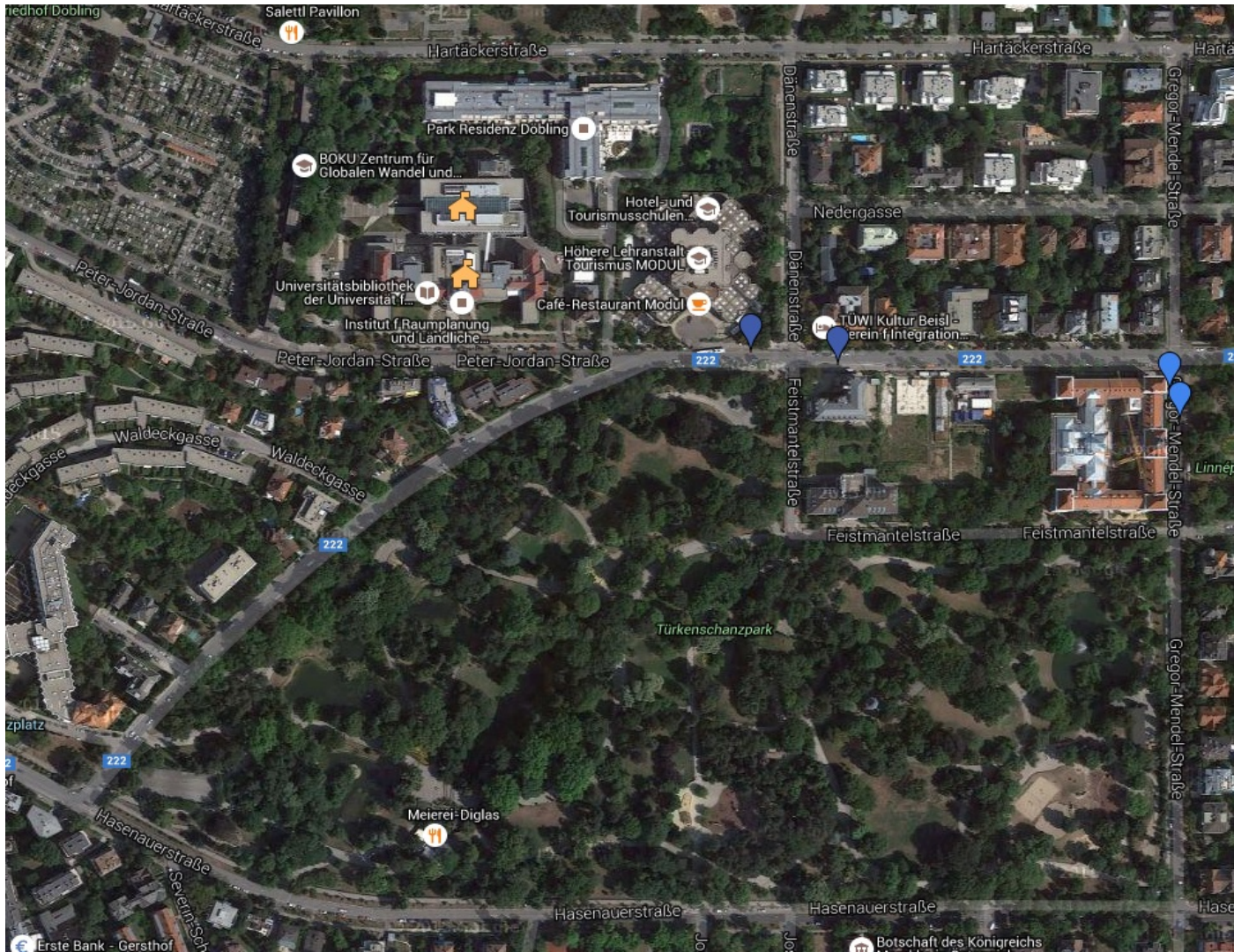



Figure 1: Overview map, highlighting forum venue and recommended hotels

Please click [here](#) for the interactive map (internet connection required). You can navigate by clicking on the respective icons on the website for instance.



 Meeting venues

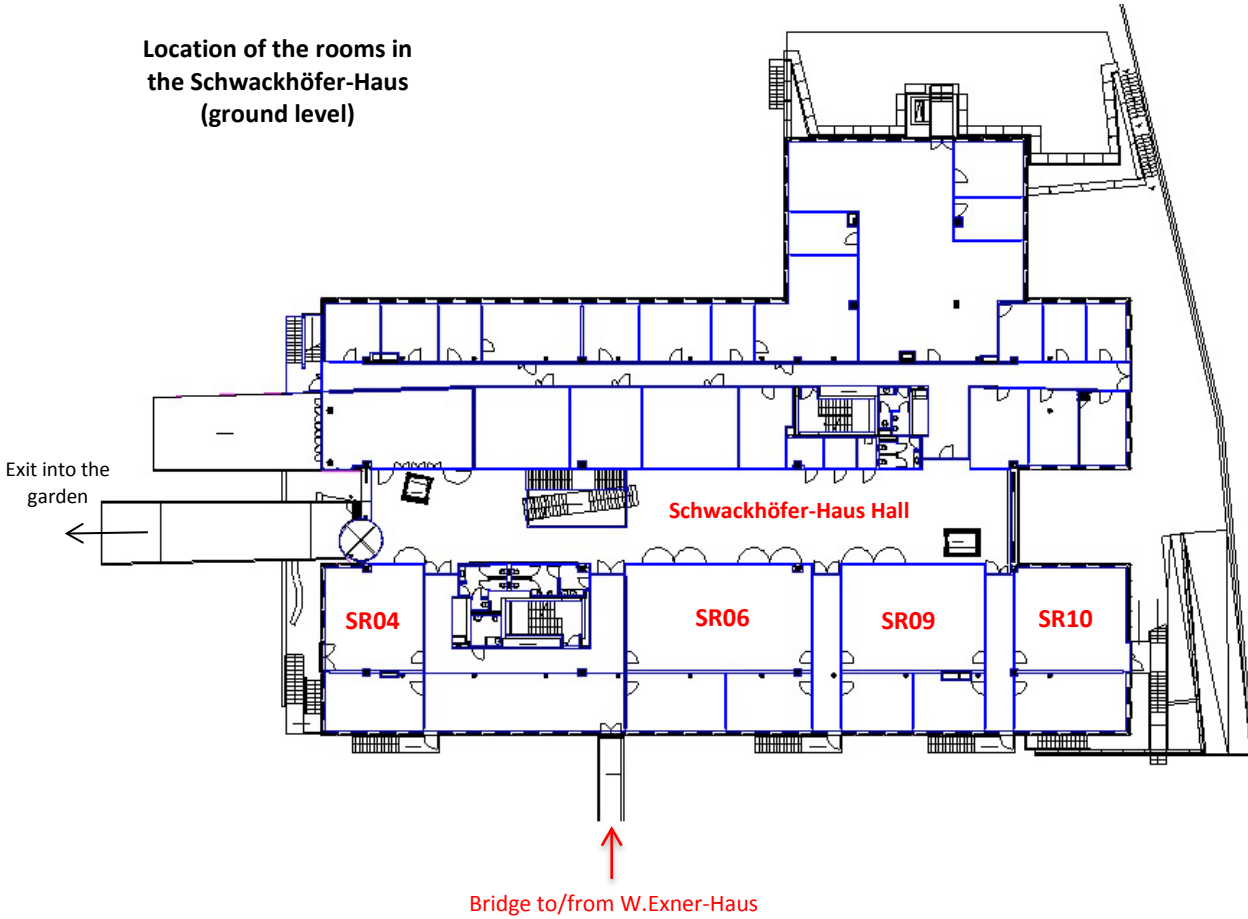
 Bus stop Dänenstrasse

 Bus stop Linnéplatz

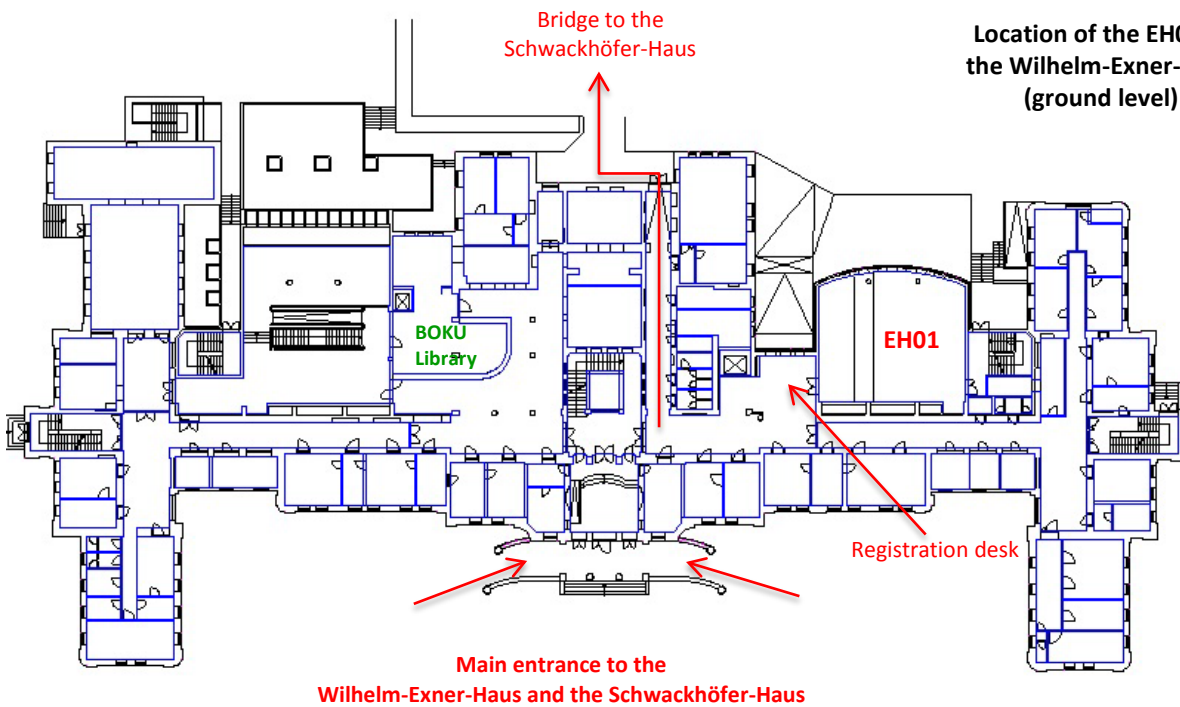
## 5. Location of the rooms in the Wilhelm-Exner-Haus and the Schwackhöfer-Haus

Both buildings are connected through a “bridge” and entered at the same entrance at P.-Jordan-Strasse.

Location of the rooms in the Schwackhöfer-Haus (ground level)



Location of the EH01 in the Wilhelm-Exner-Haus (ground level)



## 6. Touristic Information

Below you will find a list of useful websites with information about Vienna:

- [Vienna Info](#) – Tourism information Portal of Vienna
- [Culture & History](#) – Vienna City Administration

## 7. Contact Information

Please do not hesitate to contact us with any further questions you might have.

Jasmin Zisch: +43 680 1268 720

Gerhard Weiss: +43 664 8453 988

e-mail: [fp1201grantholder@boku.ac.at](mailto:fp1201grantholder@boku.ac.at)