

Greenhouse gas emissions from Agriculture, Forestry and Land Use in the 2030 Climate and Energy Framework

EFI event: The role of forests, 13 October 2015, Brussels

Peter Wehrheim, HoU Climate Finance & Deforestation



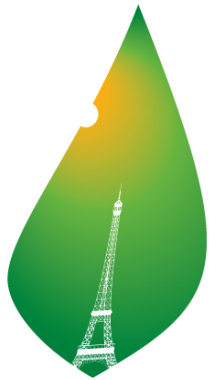
- 1. The global context***
- 2. Agriculture, Forestry, Land use in the EU so far: Current EU climate policy framework***
- 3. 2030 Climate and Energy Framework***
- 4. Stakeholder consultation***
- 5. Summary and next steps***

1 The global context

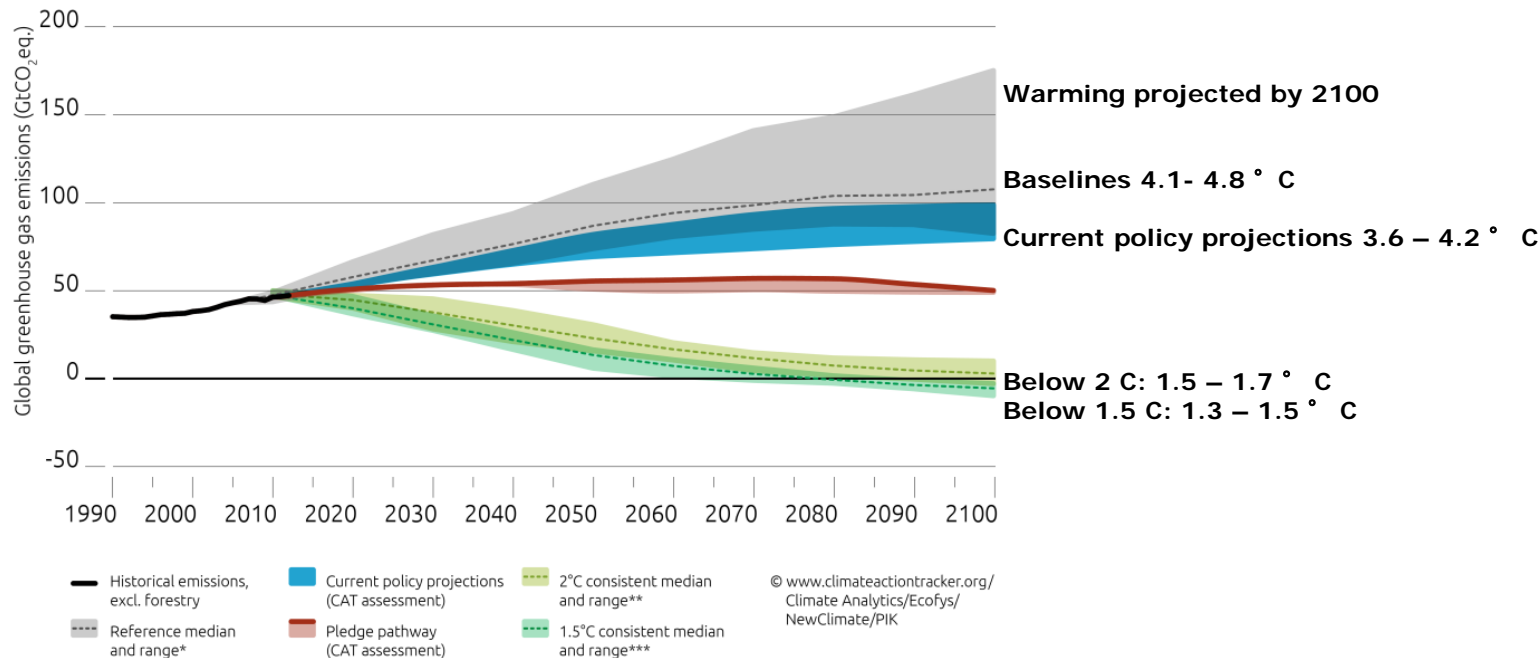


What do we need the Agreement to deliver?

Staying below 2°C:
global action 2020–2030 is critical



PARIS2015
UN CLIMATE CHANGE CONFERENCE
COP21·CMP11

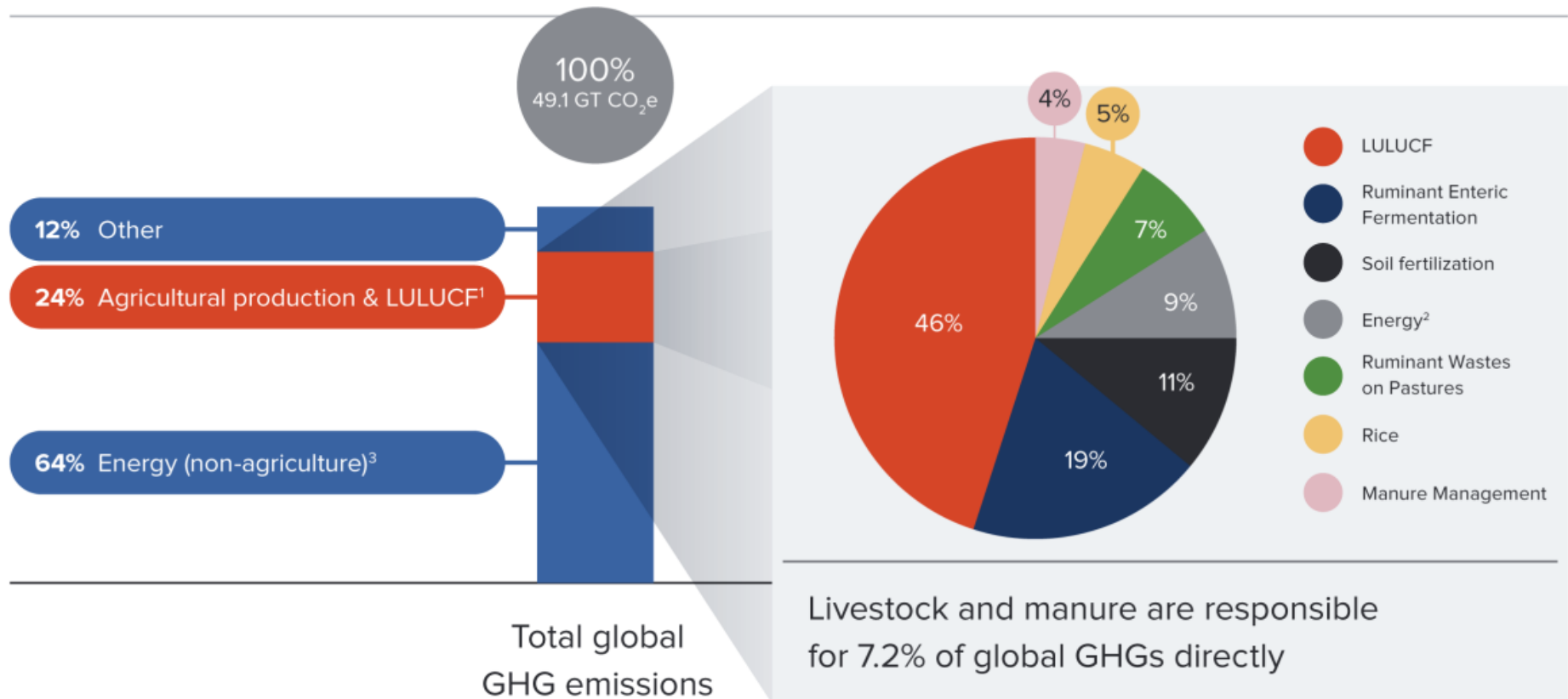


* 5-95th percentile of AR5 WGIII scenarios in concentration category 7, containing 64% of the baseline scenarios assessed by the IPCC
 ** Greater than 66% chance of staying within 2°C in 2100. Median and 10th to 90th percentile range. Pathway range excludes delayed action scenarios and any that deviate more than 5% from historic emissions in 2010.
 *** Greater than or equal to 50% chance of staying below 1.5°C in 2100. Median and 10th to 90th percentile range. Pathway range excludes delayed action scenarios and any that deviate more than 5% from historic emissions in 2010.

1 The global context



Agriculture and Forests (AFOLU): One fourth of global GHG emissions

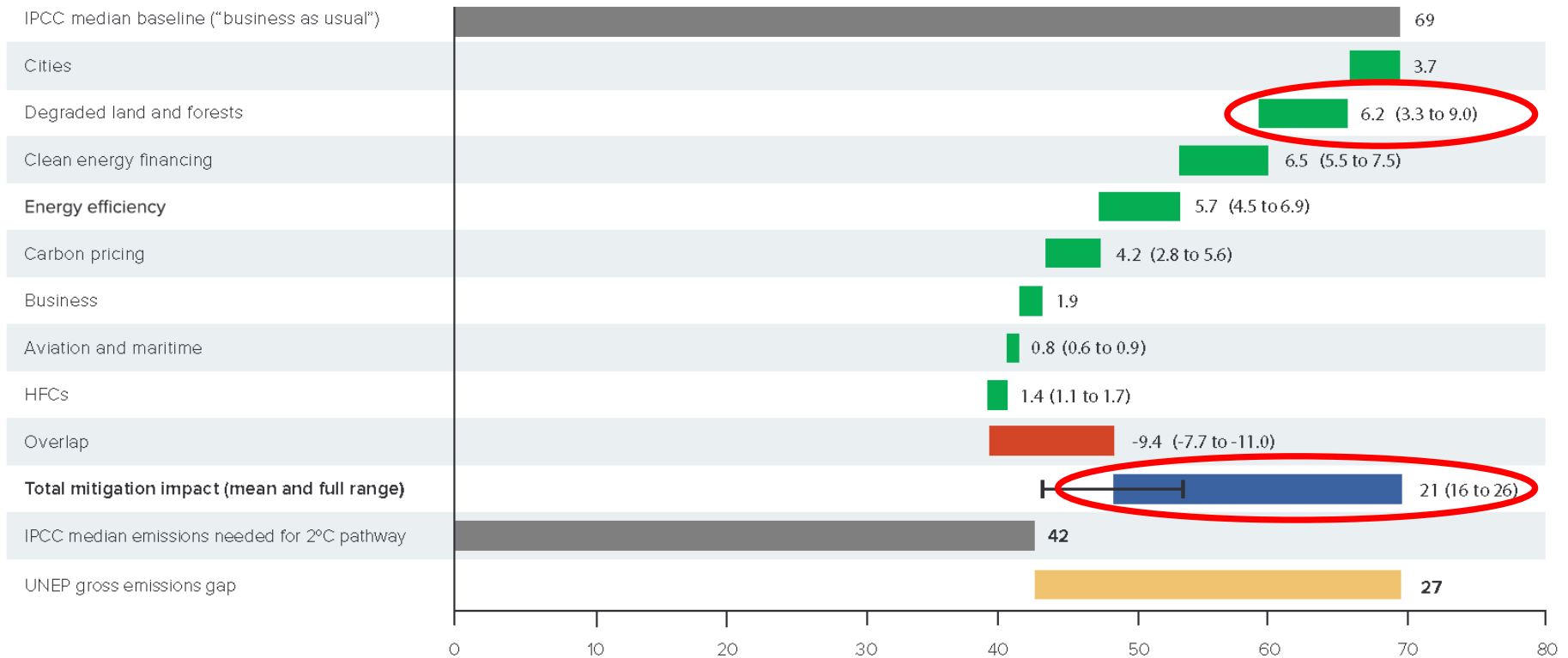


1 The global context



About a third of global, cost-effective mitigation achievable by 2030

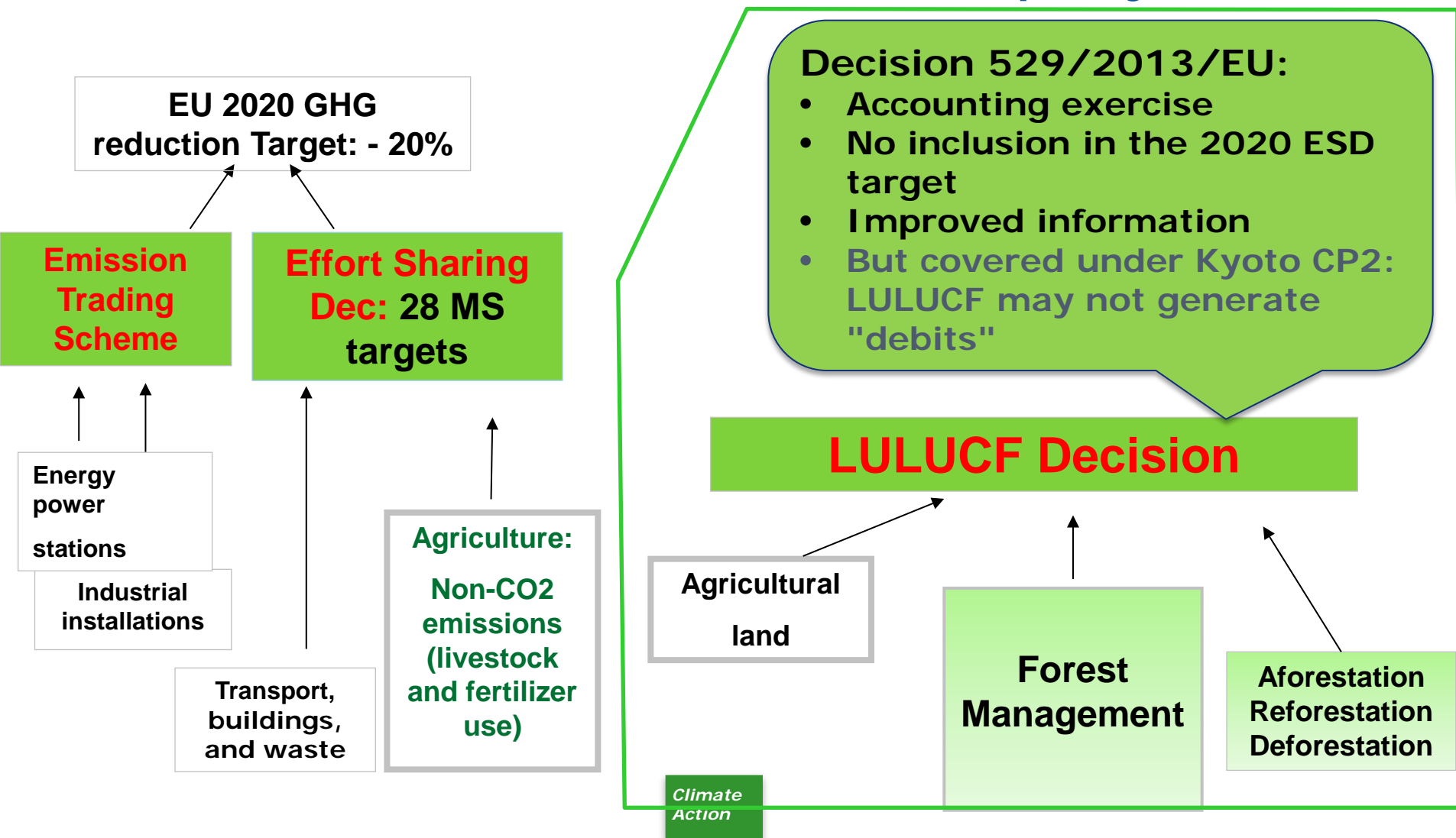
(Bars show mean emissions reduction potential for each field with the full ranges in brackets, in GtCO₂e/y in 2030.)



2 Agriculture, Forestry Land use in EU, so far



Treatment of emissions from agriculture, forestry and other land uses in **current** EU climate policy:

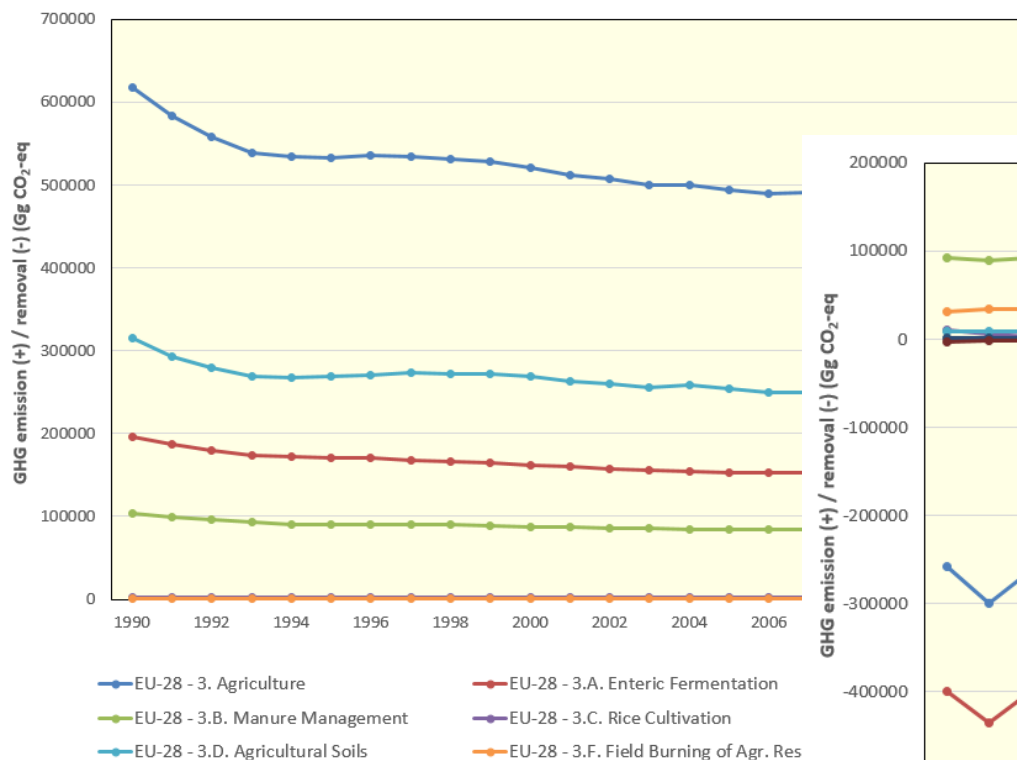


2 Agriculture, Forestry Land use in EU, so far

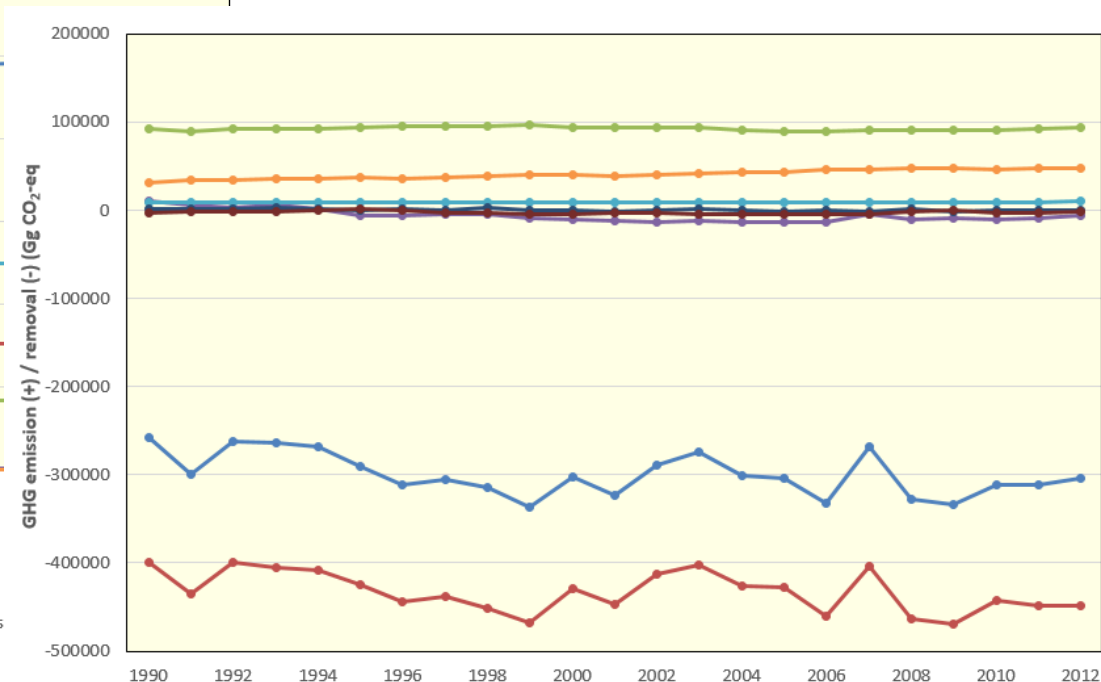


EU28 land & agriculture emissions since 1990

Agriculture Non-CO₂



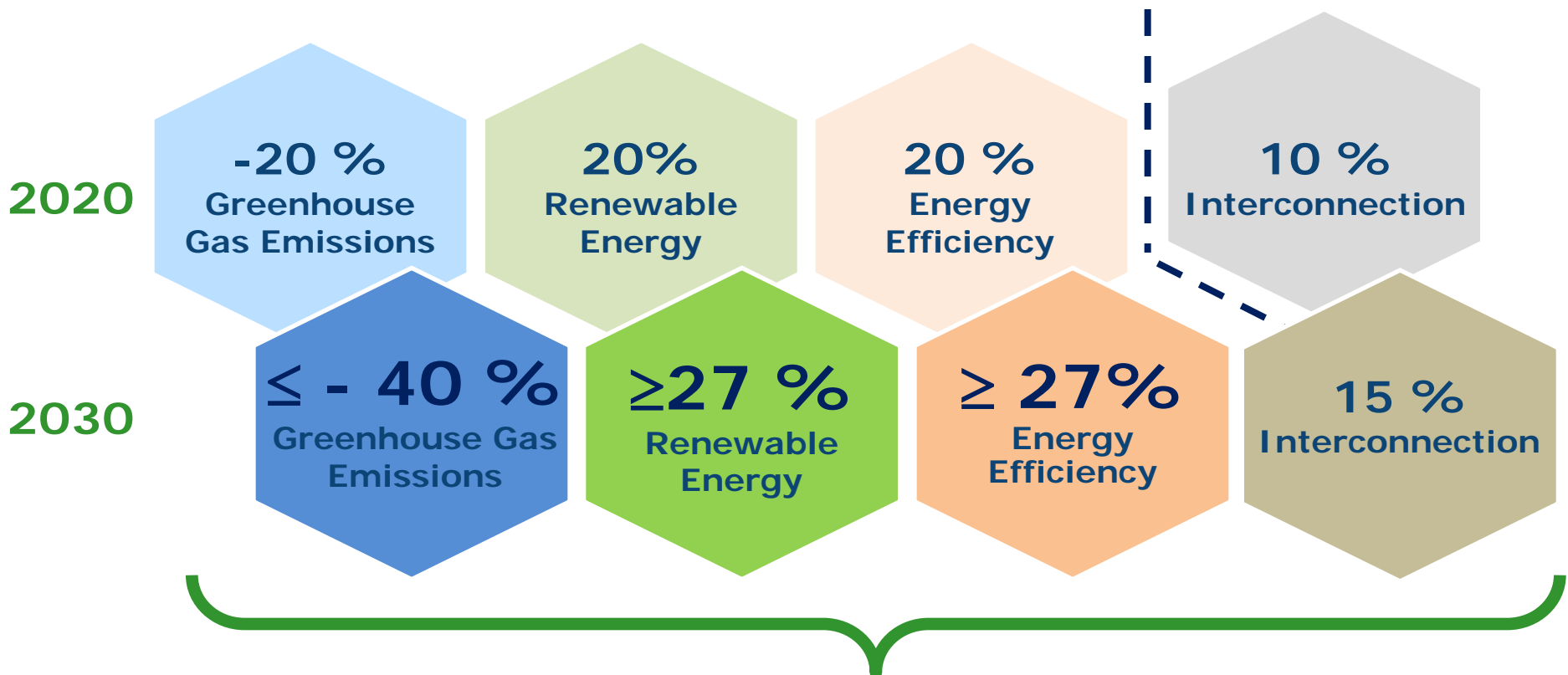
Forestry and land CO₂



GHG emissions and removals as reported under the UNFCCC

EU-28 - 4. LULUCF EU-28 - 4.A. Forest Land EU-28 - 4.B. Cropland EU-28 - 4.C. Grassland
 EU-28 - 4.D. Wetlands EU-28 - 4.E. Settlements EU-28 - 4.F. Other Land EU-28 - 4.H. Other

3 2030 Climate and Energy Framework



New governance system + indicators

3 2030 Climate and Energy Framework



- *October 2014 European Council invites EC to:*
 - Propose policy on how to include LULUCF into the 2030 greenhouse gas mitigation framework;
 - Take into account the multiple objectives:
 - food security **and** climate change mitigation
 - Acknowledge the "lower mitigation potential" of agriculture.
- *Principles for the inclusion of LULUCF:*
 - **Build on accounting rules already agreed** with Member States (LULUCF Decision from 2013)
 - Making accounting rules **fit for purpose** for 2020 to 2030
 - **No backsliding** in terms of environmental integrity; protect existing sinks; develop additional mitigation potential

3 2030 Climate and Energy Framework



LULUCF: outline of inclusion options

Option 1: Status quo

- Maintain non-CO₂ agriculture sector emissions in ESD and develop LULUCF sector policy separately, considering specific flexibilities;

Option 2: Separate pillar for agriculture and LULUCF

- Address the specific characteristics of emissions and removals from agriculture and LULUCF in one joint pillar;

Option 3: Include LULUCF in ESD

- LULUCF would be incorporated together with all other non-ETS sectors in the ESD.

3 2030 Climate and Energy Framework



Two interlinked tracks in preparing a proposal for implementing the non-ETS 2030 framework

1. Effort Sharing Decision after 2020
2. Inclusion of LULUCF in the 2030 climate and energy framework

Work parallel and interlinked:

- Stakeholder consultation
- Impact assessment
- Legislative proposal(s)

4 Consulting stakeholders



- **Consultation ran** from 26 March to 18 June 2015
- **Available** here:
http://ec.europa.eu/clima/consultations/articles/0026_en.htm
- **Launched** in parallel with the 2030 effort sharing consultation
- **Addressed** to all stakeholders and experts in the field of agriculture and forestry: farmers, SMEs, farmers' associations, regulatory authorities, research institutions, citizens etc.
- **140 replies**, including 18 MS governments + Norway
- **Closing event** on 14/15 September 2015

5 Summary



- *Important to harness mitigation potential from land use and forestry to keep below 2C*
- *Agriculture and LULUCF is part of the EU's 2030 at least 40% target*
- *The policy architecture and accounting approach is currently under consideration*
- *Aims to protect existing sinks & incentivise additional mitigation potential*
- *Legal proposal expected in 2016*



Thank you!

Your views?



**LIFE Climate
Action**
offers funding opportunities
for climate-
smart forestry:

http://ec.europa.eu/clima/policies/budget/life/index_en.htm